

ANNUAL REPORT

Timeframe: July 2021 – June 2022

Date: July 13, 2022

Prepared by:

Angela Stewart, PharmD, BCPS, FWSPA – Executive Director of the YVIEPC

Jennifer Garehime, BS, RT, (R)(ARRT) – Program Manager of the YVIEPC



Table of Contents

About the YVIPEC	4
YVIPEC Staff	4
Mission	5
Vision	5
Values	5
Strategic Priorities 2022-2025	5
New Programs and Partners	6
Organizational and Leadership Structure	7
Core IPE Curriculum	7
Councils & Committees	8
Board of Governors	8
Internal Advisory Council	8
External Advisory Council	9
Curriculum Committee	10
Assessment Sub-Committee	11
Faculty Development Committee	11
IPE Schedule & Session Participation	12
Roles & Responsibilities	12
Community Clinical Case Conferences (C4s) – Emphasizing Teams & Teamwork	12
Communication	13
Values & Ethics	14
Culinary Medicine	15
Faculty & Staff Participation in Professional Development	15
TeamSTEPPS® Master Training Course – Texas Tech IPE Consortium	15
IPE Faculty/Preceptor Development Micro-Credential – University of North Texas Health Science Center	15
IPE Facilitator Certification Course – Texas Tech IPE Consortium	15
Swipe 101 – Virtual Session	16
Swipe 201	16

Community IPE Sessions	16
Vaccine Confidence Academy	16
Interprofessional Scholarly Activities	17
SWIPE Research Team.....	17
Student IPE Video Project	17
Faculty, Staff, & Student Recognition & Awards	17
Up-And-Comer Award.....	17
Stand-Out-Performer Award.....	17
Robert Sutton Career Achievement Award.....	17
Student Engagement & Awards – Seeking Nominations for AY22-23.....	18
Collaborative Practice Community Champion – Seeking Nominations for AY22-23	18
Development of Clinical and Service-Learning Partners	18
Triumph Treatment Services	18
ESD 105 Student Health Center	18
UGM Medical Clinic.....	18
Identify External Funding Sources	18
Macy Foundation	18
Legislative Asks (WA State Legislature ARPA Funds) – Available Fall of 2022	19
Rosauers Supermarket Donation	19
GCACH Sponsorship Program	19

About the YVIPEC

Founded in 2014, the Yakima Valley Interprofessional Practice & Education Collaborative, hosted at PNWU, is a multi-institutional collaborative that provides interprofessional education, faculty and professional development, and community service and engagement to advance team-based care and improve community health. Interprofessional education, as defined by the World Health Organization, occurs when “students from two or more professions learn about, from and with each other to enable effective collaboration and improve health outcomes”. Interprofessional collaboration is an extension of that concept into the clinical realm where “multiple health workers from different professional backgrounds work together with patients, families, caregivers, and communities to deliver the highest quality of care”. As defined by the National Center for Interprofessional Practice and Education, the “new IPE” now refers to interprofessional practice and education emphasizing the critical connection between the two.

YVIPEC Staff

Angela S. Stewart, Pharm.D., BCPS, FWSPA – Executive Director of the YVIPEC



Dr. Stewart received her BS in Pharmacy from the University of Washington and her PharmD from the University of Texas. She completed a general residency at St. Joseph Hospital in Tacoma, WA and a specialty residency in adult internal medicine at the UTHSCSA and Bexar County Hospital in San Antonio, TX. She is a Board-Certified Pharmacotherapy Specialist with more than 20 years of experience leading clinical pharmacy services, providing direct patient care, teaching, and directing an accredited residency program. Dr. Stewart joined the faculty of the WSU College of Pharmacy & Pharmaceutical Sciences in 2014 and is a Scholarly Professor in the Department of Pharmacotherapy. She served as founding director and associate dean for the Yakima campus and is now the Associate Dean for Rural Health. She assumed the role of Executive Director of the Yakima Valley Interprofessional Practice and Education Collaborative at in 2021 and leads the collaborative in curriculum development, student engagement, and community service.

Jennifer M. Garehime, BS. R.T., (R)(ARRT) – Program Manager of the YVIPEC



Ms. Garehime received her BS in Business with specialization in Management & Leadership from Capella University. She received her Associates of Arts and Science degree in Radiologic Technology from Yakima Valley College in 2005. She is a member of the American Registry of Radiologic Technologists and the American Society of Radiologic Technologists. Prior to her arrival at PNWU, Ms. Garehime worked as the onsite radiographer and clinic manager for Memorial Health System. She was responsible for the day-to-day operations of a five-provider primary care practice located in Selah, Washington. She was also involved in the development and daily operations of three convenient care clinics located throughout the Yakima Valley, providing timely access to healthcare for patients and families in the surrounding areas. Her experience in healthcare management, administration, and health sciences education spans over 17 years.

Mission

The mission of the Yakima Valley Interprofessional Practice and Education Collaborative (YVIPEC) is to promote the highest quality of health care in Central Washington through creating a culture of inclusive and collaborative interprofessional education, practice, and scholarship.

Vision

Health care professionals trained by the YVIPEC will practice collaboratively to improve community health, well-being, and health equity.

Values

- We value **collaborative** healthcare leadership within a culture of respect and inclusivity where each profession practices at the highest level of its scope of practice.
- We value **healthy and engaged** communities, patients, healthcare providers and partners, particularly in rural and medically underserved areas.
- We value **person-centered** care that encourages shared decision making and is delivered with an appreciation of diverse cultures, without bias or judgment.
- We value a **sustainable** model of collaborative healthcare practice that supports safety, and quality and provides improved outcomes for those served, particularly those in rural and medically underserved areas.
- We value healthcare **equity** and removal of barriers that prevent access and collaboration in healthcare.

Strategic Priorities 2022-2025

Pillar #1 Students

- Our students enter practice with foundational knowledge and skills for interprofessional practice.
- Interprofessional opportunities are available to students outside the core IPE curriculum to enhance professional development.

Pillar #2 Faculty & Preceptors

- Faculty & preceptors have foundational interprofessional knowledge and skills to teach, advance, and model collaborative practice.
- Faculty & preceptors develop programs of scholarship related to interprofessional practice and education.
- The YVIPEC has adequate faculty participation and engagement to ensure success of the collaborative and positive impact in our communities.

Pillar #3 The Collaborative

- The YVIPEC provides IPE that meets or exceeds the accreditation standards of our partner programs.
- Participating programs are satisfied with the content, services, utilization, and engagement provided by the YVIPEC.
- Members of the collaborative are inclusive of our diverse care teams and communities.

Pillar #4 Our Communities

- Community members recognize the YVIPEC as a source of expertise in interprofessional practice and education.
- Health care in our communities is improved by YVIPEC programs and services.

Participating Programs and Partners



Pacific Northwest University of Health Sciences

- College of Osteopathic Medicine
- Master of Arts in Medical Sciences

Washington State University - Yakima

- College of Nursing
- College of Pharmacy & Pharmaceutical Sciences

Central Washington University

- Dietetics Internship Program
- Master of Public Health

Heritage University

- Medical Laboratory Sciences Program
- Nursing

New Programs and Partners

Pacific Northwest University of Health Sciences

- School of Physical Therapy – first cohort of students participating Fall 22
- School of Occupational Therapy
- School of Dental Medicine

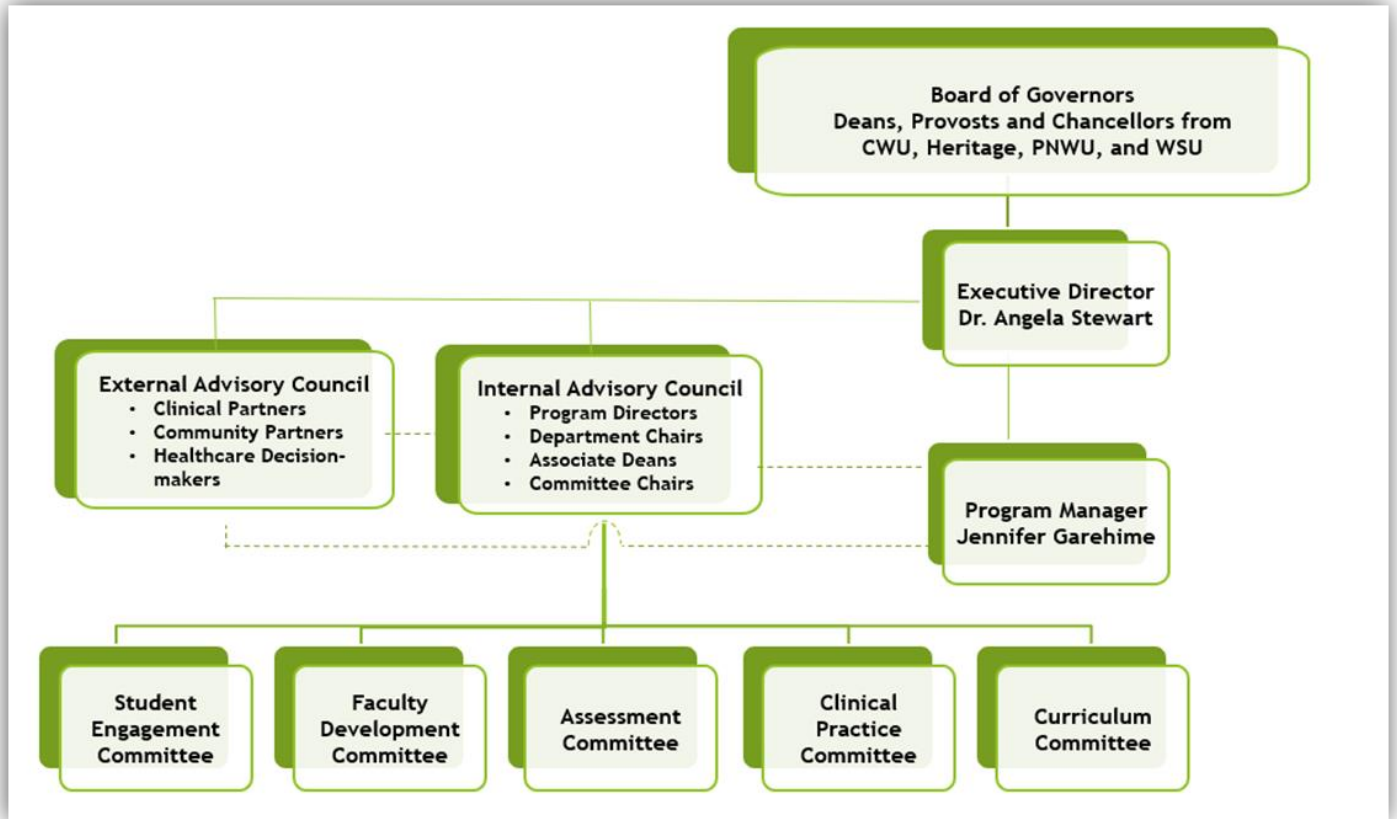
Heritage University

- Social Work – trial participation beginning Fall 22

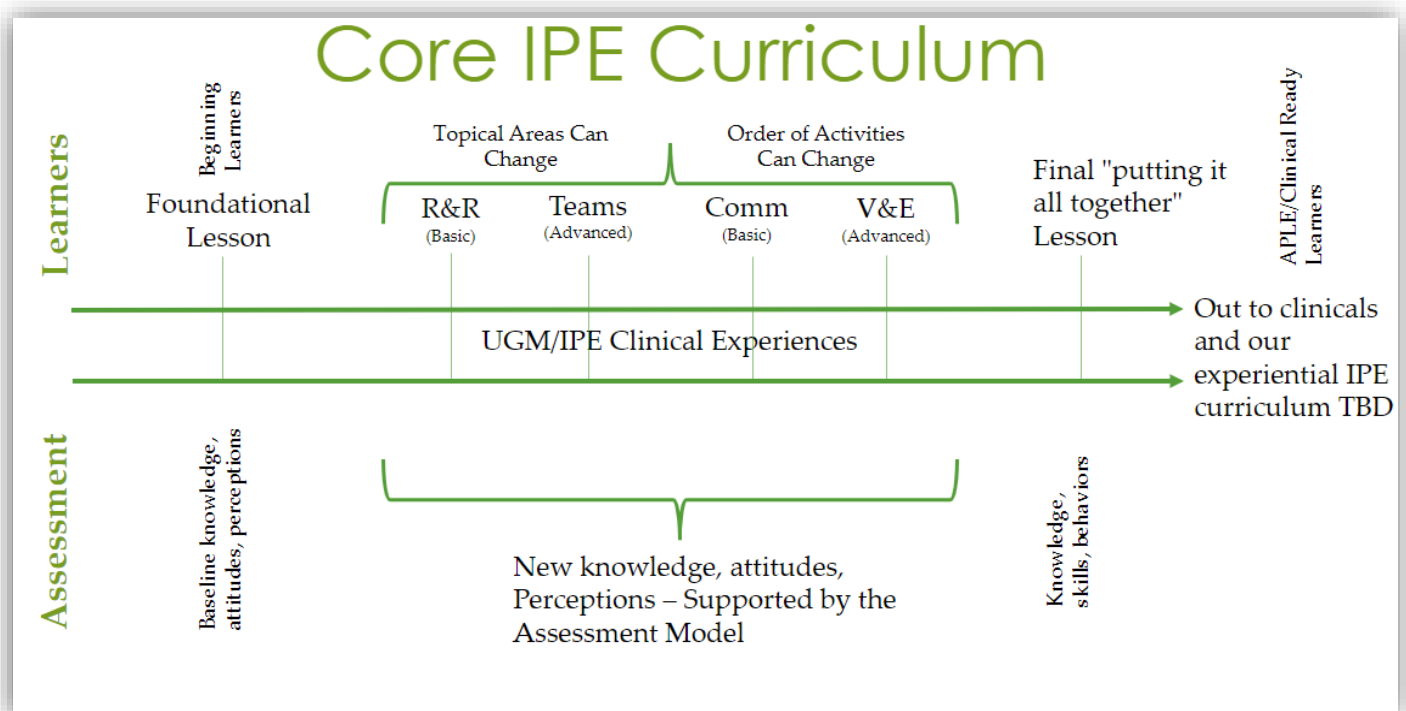
Additional Programs:

- Community Health Worker Training Programs - Washington State Department of Health
- Medical Assistant Training Programs – Charter College, WA State Society of Medical Assistants

Organizational and Leadership Structure



Core IPE Curriculum



Councils & Committees

Board of Governors

Purpose: The YVIPEC BOG provides oversight and guidance regarding the operations of the collaborative including defining the role and mission of the YVIPEC, setting strategic direction and priorities, evaluating performance and outcomes, and providing fiduciary oversight. The BOG met twice in the academic year, on 11/29/21 and 7/13/22.

Roster:

Ed Bilsky, PhD – Provost/Chief Academic Officer, PNWU	Daryll DeWald, PhD – Vice President/Chancellor WSU Health Sciences Spokane
Thomas Scandalis, DO – Dean, College of Osteopathic Medicine, PNWU	Mark Leid, PhD – Dean, College of Pharmacy & Pharmaceutical Sciences, WSU
Mary Koithan, PhD, RN, CNS-BC, FAAN – Dean, College of Nursing, WSU	Kazuhiro Sonoda, PhD – Provost/VP Academic Affairs, Heritage University
Heidi Henschel Pellet, EdD – Interim Dean, CWU College of Education & Professional Studies (term ended 2/2022)	

Internal Advisory Council

Purpose:

- To provide expert opinion and to advise on contemporary interprofessional practice and education to promote strategic planning and direction for the YVIPEC.
- To ensure engagement and collaboration across the YVIPEC partner institutions and programs.
- To facilitate progressive and innovative ideas to advance IPE initiatives within the YVIPEC.
- To ensure recursive communication flow across the committees and participants within the YVIPEC.
- To serve as liaisons to local, regional, and national IPE interests on behalf of the YVIPEC.

Accomplishments:

- Strategic plan review and approval
- YVIPEC annual award nominations
- Renaming the collaborative
- Visioning for new curricular model
- Identification of new educational and community partners and programs

Roster:

Chair: Dan Ferguson, Director; Center for Excellence Allied Health	Jennifer Garehime, BS, RT, (R)(ARRT); YVIPEC Program Manager
Vice Chair: Tishra Beeson, DrPH, MPH; CWU Assistant Professor of Public Health	Gwen Halaas, MD, Vice Chancellor; WSU Academic Affairs (left WSU 5/2022)
Damianne Brand, Pharm.D.; WSU Assistant Professor of Pharmacy	Anne Kim, Pharm.D., WSU Assistant Professor of Pharmacotherapy
Bevan Briggs, NP, Academic Director; WSU Assistant Professor of Nursing	John Moore, DO; PNWU Chair of Family Medicine (term ended 1/2022)
Ethan Bergman, PhD, RDN, CD, FADA; CWU Dietetics (retired 6/2022)	Christina Nyirati, PhD, RN; Heritage University Professor and Chair of Nursing
Dawn DePriest, DNP, ARNP; WSU Director of Experiential Learning	Lisa Steele, MPH; PNWU Executive Director of SIM Center
Malcolm Cutchin, PhD; PNWU Director of Academic Research & Partnerships (resigned 6/2022)	Angela Stewart, PharmD, BCPS; YVIPEC Executive Director
Heather Fritz, PhD; PNWU Associate Professor, Founding	Lisa Vickers, RN; WSU Associate Professor & Campus Director



Director of Occupational Therapy	of Nursing (term ended 12/2021)
Peggy Trueblood, PT, PhD; PNWU Professor & Program Director of the School of Physical Therapy	

External Advisory Council

Purpose:

- Provide support, advice, and expert opinion on matters of Interprofessional Practice and Education (IPE) and community engagement to the Office of Interprofessional Practice and Education as well as the Internal Advisory Council.
- Identify community needs, trends, and opportunities related to IPE that can be addressed by the Collaborative.
- Sustain and support the Mission, Vision, Values, and reputation of the Yakima Valley Interprofessional Practice and Education Collaborative (YVIEPC) and to learn how the YVIEPC functions with regard to its educational goals, financial priorities, and its role in healthcare education.
- Facilitate progressive and innovative ideas from a community perspective to advance IPE initiatives within the YVIEPC, including unique healthcare delivery models, health policy tenets, contemporary models of care, attention to the social determinants of health, and workforce development.
- Help serve as public advocates for IPE and liaisons to local, regional, and national communities of interest on behalf of the YVIEPC.
- Serve the YVIEPC as a whole, rather than any part of it or any personal or political cause.

Accomplishments: The EAC met 1/26/22. The council reviewed and commented on the strategic plan and assisted in identification of service-learning pilot opportunities as well as professional development needs.

Roster:

Chair: Mary Pellicer, MD	Medical Director -Institute for the Study of Peak States
Ron Anderson	Yakima County Commissioner - District 2
David Bauman, PsyD	Behavioral Health Education Director – Community Health of Central WA/Beachy Bauman Consulting, PPLC
Randy Beehler	Communications and Public Affairs – Director, City of Yakima
Bridget Beechy, PsyD	Director of Behavioral Health - Central Washington Family Medicine Residency Program/ Beachy Bauman Consulting, PPLC
Ben Beck-Coon, JD, MSW	Operations Manager - Behavioral Health Services (BHS), Yakima Valley Farm Workers Clinic
Malcolm Cutchin, PhD	Director of Academic Research and Partnerships - PNWU
Darlene Darnell, ACSW, LICSW	President and CEO - Catholic Charities
Dan Ferguson, MS	Director, Allied Center of Excellence - Yakima Valley College Chair, YVIEPC Internal Advisory Council
Tom Gaulke	CEO - Entrust Community Services
Ron Gengler, LMCH	Chief Clinical Officer - Comprehensive Healthcare
Lori Green	Chief Nursing Officer -Yakima Valley Memorial Hospital
Shawnie Haas, MBA, RN	President and CEO, Signal Health
Rhonda Hauff	CEO - Yakima Neighborhood Health
Mark Koday, DDS	Retired/Northwest Dental Residency Program Director - Yakima Valley Farm Workers Clinic
Sandra Linde	Chaplain - Astria Sunnyside Hospital
Mark Loes, MBA, CDP	Director of Operations - Sundown M Ranch
Russell Maier, MD FAAFP	Associate Dean for Graduate Education - PNWU



Kevin Martin, MD	Chief Medical Officer - Kittitas Valley Hospital
Carole Peet, RN, MSN, MBA, FACHE	CEO - Yakima Valley Memorial Hospital
Katina Rue, DO	President - Yakima Medical Society/PNWU
Angie Stewart, PharmD, BCPS	YVIPEC Executive Director & Associate Dean for Rural Health - WSU
Jennifer Garehime, BS, RT, (R) (ARRT)	YVIPEC Program Manager – PNWU

Curriculum Committee

Purpose:

- To develop interprofessional educational activities/events that reflect the core competencies of the YVIPEC (see the link to the YVIPEC Core Competencies at: <https://www.pnwu.edu/inside-pnwu/academic-partnerships/yvipec/subcommittees>)
- To better prepare students for the future of interprofessional collaborative practice and team-based patient care.
- To seek alignment of the curricular content, learning objectives, and performance outcomes in interprofessional educational activities/events among the institutional partners with that of the adopted core competencies of the YVIPEC in conformity with accreditation standards and national trends.
- To evaluate proposals for collaborative interprofessional educational events/activities within the YVIPEC in accordance with the core competencies of the YVIPEC.
- To conduct regular assessment of activities/events of the YVIPEC for curricular content and learning outcomes success

Accomplishments:

- Updated all core IPE curriculum content and facilitator guides
- Creating the final culminating session – high fidelity simulation highlighting the compassionate care objectives
- Assisted in scheduling and facilitation of all core IPE learning sessions
- Drafted new passport curriculum model
- Developing learning objectives and planned experiences for new service-learning and clinical education

Roster:

Chair: Lisa Steele, MPH; PNWU Executive Director of SIM Center	Vice Chair: Christina Buchman, PharmD; WSU Assistant Professor of Pharmacology
Amanda Adamson, PT, DPT, OCS, CAPP-Pelvic; PNWU School of PT, Director of Clinical Education	Jayne Beebe, MPN, BSN; WSU Associate Professor
Tishra Beeson, DrPH, MPH; CWU Assistant Professor of Public Health	Jami Flick, MS, OTR/L; PNWU Director of Clinical Education for Occupational Therapy
Damianne Brand, Pharm.D.; WSU Assistant Professor of Pharmacy	Jennifer Garehime, BS, RT, (R)(ARRT); YVIPEC Program Manager
Angela MacCabe, PT, DPT, PhD; PNWU Associate Professor in the School of Physical Therapy	Christina Nyirati, PhD, RN; Heritage University Professor and Chair of Nursing
Shawna Martin; Heritage University MLS Program Director	Angela Stewart, PharmD, BCPS; YVIPEC Executive Director
Linda Mensing, RN; Heritage University Assistant Professor of Nursing	Duane Teerink, DO; PNWU Assistant Professor of Family Medicine

Assessment Sub-Committee

Purpose:

- To provide comprehensive assessment of YVIPEC functions and outcomes to ensure that the mission of the collaborative is met and that resources are used consistently with the collaborative’s strategic goals.
- To develop and implement assessment plans and reports, analyze and interpret assessment results, and disseminate assessment results to the YVIPEC Executive Director, Internal Advisory Council, Board of Governors and/or other university and programmatic partners as required.

Accomplishments:

- Developed strategic plan and collaborative outcome measures
- Drafted model for assessing student learning outcomes
- Identifying best tools for measuring achievement of student learning outcomes
- Ensuring alignment of session learning objectives with overall assessment plan
- Exploring data repository and LMS tools

Roster:

Chair: Damianne Brand, Pharm.D.; WSU Assistant Professor of Pharmacy	Jennifer Garehime, BS, RT, (R)(ARRT); YVIPEC Program Manager
Malcolm Cutchin, PhD; PNWU Director of Academic Research & Partnerships	Lisa Steele, MPH; PNWU Executive Director of SIM Center
Lori Fulton, EdD; PNWU Assistant Provost for Integrated Institutional Effectiveness	Angela Stewart, PharmD, BCPS; YVIPEC Executive Director

Faculty Development Committee

Purpose:

- Develop and implement an interprofessional faculty development program (SWIPE) that supports an interprofessional and collaborative faculty and culture on our campuses and in our communities
- Evaluate faculty and preceptor educational needs to identify on-going and new topics and content to be included in SWIPE and other educational offerings
- Ensure that faculty have the knowledge, skills, and behaviors needed to support learners’ achievement of the YVIPEC core competencies
- Serve as liaisons to local, regional, and national IPE interests related to faculty development on behalf of the YVIPEC.

Accomplishments:

- Converted SWIPE curriculum to online format
- Delivered SWIPE 101 program 3/25/22
- Developed online IPE faculty resource page
- Assisted with offering Vaccine Confidence Academy
- Approved an IPE faculty curricular model

Roster:

Chair: Anne Kim, Pharm.D., WSU Assistant Professor of Pharmacotherapy	Vice-Chair: Thomas Miller, DO, MPH; PNWU Assistant Professor of Family Medicine
Kim Foster, MS, BSN; YVMH Manager of Clinical Education Services	Jennifer Garehime, BS, RT, (R)(ARRT); YVIPEC Program Manager
Angela MacCabe, PT, DPT, PhD; PNWU Associate Professor in the School of Physical Therapy	Angela Stewart, PharmD, BCPS; YVIPEC Executive Director

IPE Schedule & Session Participation

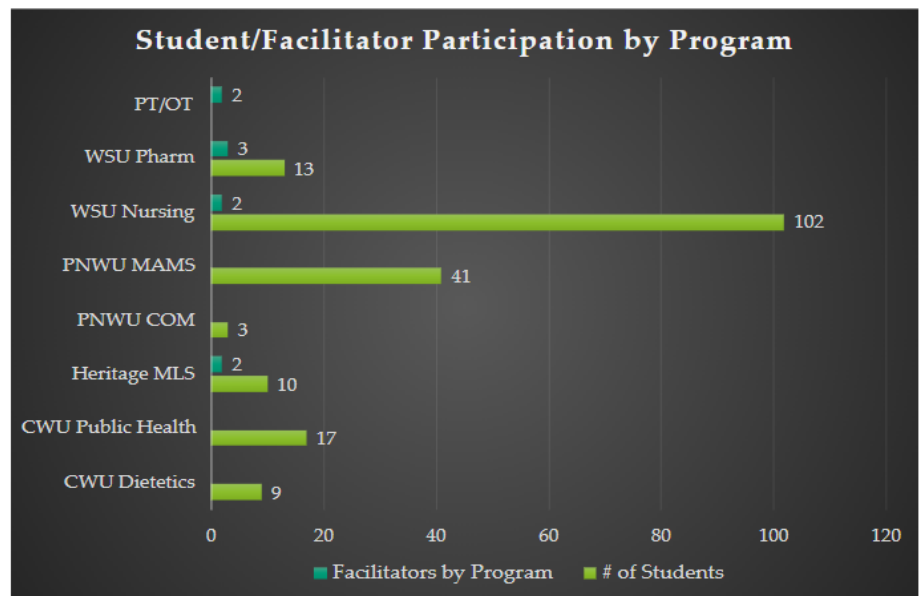
Roles & Responsibilities

In this first session in the YVIEPEC Core IPE Curriculum, students gain a better understanding of their roles and responsibilities on a health care team as well as increase their knowledge and appreciation of the important roles of the other members of the team including the patient and family or caregivers. This session is designed for students that are early in their professional training and provides foundational information that is built upon and expanded as they progress through the curriculum. The session includes two activities that students will complete in small groups. The first activity is a round robin of introductions that include a description of their profession and its role in providing patient care in a collaborative environment. The second activity includes review of a patient case and identification of all the health care providers and social services that would be important in meeting the patient and family needs. The case is designed to be appropriate to early learners that have limited clinical experience.

Student Learning Objectives

1. Describe the roles and responsibilities of each member of the health professions team and how the team works together to provide care in a clinical and non-clinical context.
2. Compare the unique and overlapping contributions to the care of individuals, families and communities made by selected health professionals in a clinical and non-clinical context.
3. Communicate respectfully with team members to clarify each member’s responsibility in developing and executing components of a treatment plan.
4. Describe how collaborations across the health professions are necessary to promote the health of communities and populations.
5. Explain how one’s own professional role is enacted within an interprofessional health team

- Completed 10/15/2021
- Two Sessions
 - 8 Facilitators Session #1
 - 7 Facilitators Session #2
 - 195 Students Total
- Post-Session Survey emailed to participants through [REDCap](#)



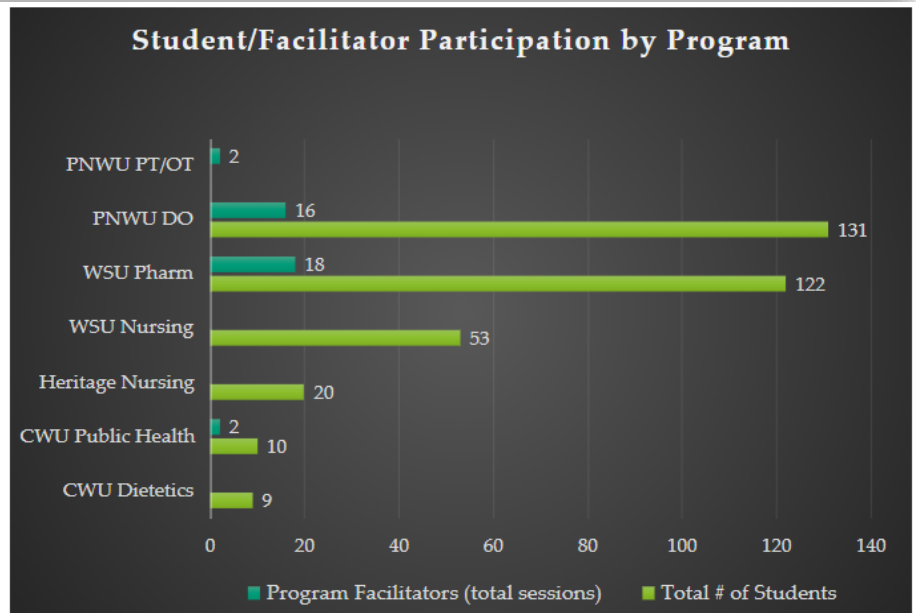
Community Clinical Case Conferences (C4s) – Emphasizing Teams & Teamwork

The C4 activities provide students of varied healthcare professions an opportunity to learn about, with, and from one another through a shared experience which includes case review and development of a prioritized problem list and interprofessional care plan for a complex patient. The session includes an opportunity for student teams to engage with a simulated patient to collect additional information and to engage the patient in preliminary shared decision making. The goal of the Community-based Clinical Case Conferences (C4s) is to enhance student experience with utilizing the core IPE competencies including communication, values & ethics, roles & responsibilities, and special emphasis on teams and teamwork.

Student Learning Objectives

1. Describe the roles and practices of effective teams.
2. Engage in team-based person-, family-, community-, and population-centered problem-solving.
3. Manage disagreements that arise within the health care team including with clients/patients, families, and community members.
4. Demonstrate elements of effective team performance.

- Tuesdays 1-4pm, Aug – Nov
- Accommodated All Participating Programs
- 9 Facilitator Volunteers
- 345 Students Total
- Post Session Survey created through REDCap – data collected beginning with 10/19/21 session and forward.



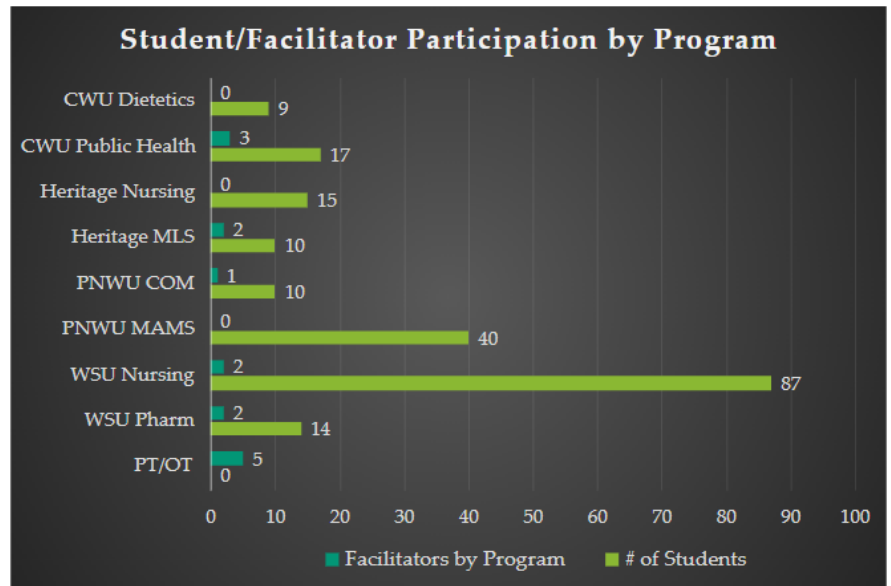
Communication

In the second session in the YVIPEC Core IPE Curriculum, students gain an understanding of the critical importance of effective communication in preventing medical error and ensuring positive outcomes of health care. This session is designed for students that are early in their professional training and provides foundational knowledge and skills in use of structured communication techniques, specifically the SBAR communication tool. During this session, students in small groups role play various care hand-off scenarios and use the SBAR format to develop clear, concise communication of critical patient information. The scenarios are designed to be inclusive of multiple professions and are appropriate for learners with limited clinical experience.

Student learning objectives:

1. Use effective communication tools and techniques to facilitate discussions and interactions with healthcare team members in ways that are understandable and person-centered, including in difficult situations, crucial conversations, or conflicts.
2. Recognize how one’s experience level, expertise, culture, power, and hierarchy within the health team contribute to effective communication, and positive interprofessional working relationships.
3. Listen actively, respond respectfully, and encourage the ideas and opinions of other team members.
4. Give timely, sensitive, instructive feedback to others about their performance on the team.

- 5 Sessions - January 19-21, 2022
- Accommodated All Participating Programs
- 15 Facilitator Volunteers
- 202 Students Total
- Post Session Survey & Reflection through REDCap



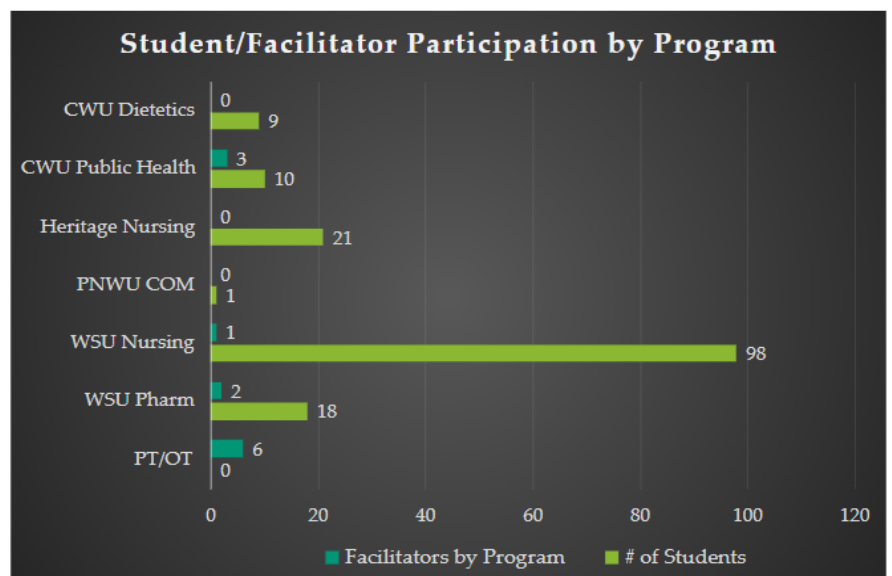
Values & Ethics

In this session, students will gain experience with root cause analysis and error disclosure as they work in teams to explore a complicated case that includes discovery of a medical error. The first activity is case review and use of a cause-and-effect diagram (fishbone diagram) to begin identification of causes of the error. Students then prepare to disclose the error to a simulated care giver. Large group debrief occurs to give learners an opportunity to identify and describe their experiences with teamwork, ethics, and professional values.

Student learning objectives:

1. Work with the professional health care team and clients, families, and communities to maintain a climate of mutual respect and shared values.
2. Identify the ethical principles that should guide the work of the interprofessional health care team.
3. Evaluate the impact of conflicts between professional and personal values.
4. Demonstrate honesty and integrity in interactions with all team members, including individuals, families, and communities.
5. Engage in discussions of interprofessional plans of care and treatment that demonstrate respect for the personal values of the health care team including individuals, families, and communities.

- 3 Sessions - February 24 & 25, 2022
- Accommodated All Participating Programs
- 12 Facilitator Volunteers
- 157 Students Total
- Post Session Survey & Reflection through REDCap



Culinary Medicine

The YVIPEC sponsored the elective IPE Culinary Medicine Program for AY21-22. The program was led by Dr. David Gee from CWU, Dr. Kathaleen Briggs Early from PNWU, and Elaina Moon from Health Eats Nutrition. A total of five hands-on, interprofessional learning and cooking sessions were held at the Healthy Eats Classroom in Yakima between January and April. The topics of the five sessions included: 1) Plant-based diets, 2) Eating for Diabetes, 3) the DASH diet, 4) Healthy Mexican Cuisine, and 5) the Mediterranean Diet. Each session hosted 14-23 students (attendance capped at 23 due to COVID restrictions) and included PNWU COM, WSU Pharmacy, and CWU Dietetics students.

Goals:

- Continue YVIPEC sponsorship of the Culinary Medicine program
- Increase interprofessional participation in the program through improved communication
- Identify external funding sources to support growth of the program

Faculty & Staff Participation in Professional Development

TeamSTEPPS® Master Training Course – Texas Tech IPE Consortium

TeamSTEPPS® Master Training is targeted at those individuals interested in implementing a structured team development training program within their organization. It is an intermediate-level course intended for those with a basic working knowledge of TeamSTEPPS® tools and concepts who are ready to champion the implementation of TeamSTEPPS® training

Participants

- Dr. Christina Buchman
- Ms. Lisa Steele

Goal: Incorporate TeamSTEPPS® training into the YVIPEC core curriculum to optimize patient care by improving communication and teamwork skills among health care professionals.

IPE Faculty/Preceptor Development Micro-Credential – University of North Texas Health Science Center

Faculty earning this micro-credential in interprofessional education will demonstrate scholarship in the knowledge, attitudes, and skills necessary to facilitate the integration of interprofessional education into health professions curricula.

- Approximately 40 hours of online asynchronous and synchronous training and project work
- Partnership with faculty members from different professions to develop, implement, and assess outcomes of an approved interprofessional learning experience
- Participation in scholarship, by sharing the outcomes of their IPE at a professional conference(s) or through the publication of an educational research article.

Participant - Dr. Damianne Brand-Eubanks

Goal: Apply new knowledge and skills in leadership of the YVIPEC assessment committee.

IPE Facilitator Certification Course – Texas Tech IPE Consortium

The IPE Facilitator Certification Course is an experiential course that provides an overview of the role of the IPE faculty facilitator, plus opportunities for practice using a wide range of tools and techniques. Through 6 hours of online pre-work and a one-day virtual training, faculty gain the knowledge and skills to be an effective IPE facilitator, as well as will be able to promote organizational changes and collaborative leadership, which will support the promotion of IPE within the institution.

- Learning objectives included:
 - Establishing a Climate for Learning: Psychological Safety
 - The Power of Learning Teams
 - IPE Facilitation Techniques
 - Promoting DEI through IPE
 - IPE Facilitation Challenges

- Assessment of Learners in IPE
- Improve Skills for Facilitation & Interprofessional Education

Participant - Jennifer Garehime, BS, RT, R(ARRT)

Goal: Apply ability to engage teams of learners; introduce IPE concepts and skills; support learners in the development of knowledge, perceptions, and skills for collaborative care; and measure outcomes of IPE learning activities.

Swipe 101 – Virtual Session

Success with Interprofessional Practice and Education (SWIPE 101) faculty & preceptor development program provides faculty and preceptors with the foundational knowledge regarding interprofessional practice and education. Participants engaged with healthcare professionals as our team guided them through an interactive curriculum. The course objectives are to equip faculty and preceptors with the knowledge and tools for facilitating interprofessional education for healthcare professional students in the classroom or in a clinical practice setting.

The SWIPE 101 session was held virtually via Zoom on Friday, March 25th, 2022, from 1:00 pm – 4:00 pm. Twelve participants registered with ten in attendance. Participants varied in profession and organization, demonstrating expansion of our reach to community members for faculty development in IPE. Participants were required to complete the four ASU IPE modules and submit their certificates of completion to the YVIPEC. Only four of the ten participants completed this task. To increase participation, the YVIPEC Faculty Development Committee plans to provide additional SWIPE 101 sessions throughout the academic year, offering hybrid options and alternative time frames, and engage our community partners by hosting on-site IPE professional development sessions. Our next session has been tentatively scheduled for November 4, 2022, from 2:00 pm – 5:00 pm.

Swipe 201

In this session, faculty and preceptors will learn innovative teaching approaches for facilitating IPE and collaborative practice. Participants will engage with other healthcare professionals as our team guides them through an interactive curriculum that will equip you with the skills and behaviors for facilitating interprofessional education for healthcare professional students in the classroom or in a clinical practice setting.

The SWIPE 201 session was scheduled virtually for Friday, April 22, 2022, from 1:00 pm – 4:00 pm, however, our event was cancelled due to low attendance. We continue exploring ways in which we encourage participation in IPE faculty development, including offering multiple session dates/times, offering CE, and emphasizing SWIPE as a paid service that is included in the YVIPEC annual membership package. Our next session has been tentatively scheduled for September 16th, 2022, from 2:00 pm – 5:00 pm.

Community IPE Sessions

Vaccine Confidence Academy

Hosted by the YVIPEC in partnership with the Merck Academy, the Vaccine Confidence Academy presentation, delivered by Colleen Terriff, PharmD, MPH, reviewed several factors driving vaccine hesitancy and presented approaches to improve vaccine confidence. Participants learned about various communication strategies to help improve vaccine confidence, including a presumptive approach, storytelling, myth-busting, and motivational interviewing.

Faculty, preceptors, and students of all professions were invited to attend this free, virtual event held the evening of Wednesday, April 13th. Unfortunately, we experienced very low attendance. Feedback from our internal advisory council for ways to improve participation for hosting similar events in the future included offering continuing education credits, offering additional evenings & weekends, and asking the External Advisory Council for input on additional topics and preferred format for future IPE events.

Interprofessional Scholarly Activities

SWIPE Research Team

Kim A, Carollo S, Stendell-Hollis N, Miller T, Stewart A, Hepner E. Outcomes of an Interprofessional Faculty Development Program on Knowledge and Value of Interprofessional Practice and Education. *Health, Interprofessional Practice and Education*, 2021; 4(2),p.eP2138. DOI: <http://doi.org/10.7710/2642-1148.2138>.

Student IPE Video Project

Created by a group of six OMS2 student volunteers, the IPE video project is an online resource hosting a series of local healthcare provider interviews addressing interprofessional practice, education, and medical collaboration. The project was sponsored by the YVIPEC to help supplement the IPE curriculum as a resource for students to learn about the healthcare team from role models in the Yakima area. The site will transition to PNWU for hosting and will continue to be managed by Student Doctor Sharma, and eventually the YVIPEC Student Engagement Committee. <http://yvipecvideoproject.com/>

Project Leader: Akash Sharma, PNWU OMS2

Faculty, Staff, & Student Recognition & Awards

Up-And-Comer Award

Awarded to a new faculty member who has made a significant impact on the YVIPEC and IPE education & practice. Candidates are those who have been engaged with the YVIPEC for three years or less and have demonstrated enthusiasm for and commitment to advancing IPE and IPCP through teaching, scholarship, service, and/or clinical practice.

2020-2021 Award Winner

- Dr. Anne Kim – Associate Professor, College of Pharmacy & Pharmaceutical Sciences, WSU

2021-2022 Award Winner

- Dr. Amanda Adamson – Assistant Professor, School of Physical Therapy, PNWU

Stand-Out-Performer Award

Awarded to faculty member who has been providing leadership and foundational support to the YVIPEC. Candidates are those who have been actively engaged with the YVIPEC for 3-10 years and have made significant contributions to the advancement of IPE or IPCP through IPE curriculum design, implementation, assessment, 2) faculty development, 3) IPE or IPCP related scholarship, 4) precepting interprofessional teams of learners, or 5) advancing IPE in the community.

2020-2021 Award Winner

- Ms. Lisa Steele – Director, Department of Simulation, PNWU

2021-2022 Award Winner

- Dr. David Gee – Professor and Program Director of Food Science and Nutrition, CWU

Robert Sutton Career Achievement Award

This award is named in honor of Dr. Robert Sutton one of PNWU's founding leaders who served until his retirement as Senior Advisor to the President at PNWU. In this role, he was responsible for bringing together the first interprofessional and interinstitutional team of faculty leaders and guiding them in creating a vision for interprofessional practice and education in Central, WA.

2020-2021 Award Winners

- Dr. Erin Hepner – Associate Professor Family Medicine, PNWU - retired
- Dr. Keith Monosky – YVIPEC Executive Director, PNWU - retired
- Dr. Linda Dale – Physician Assistant at Best Practices Medical Clinic
- Dr. Sandy Carollo – Professor, Provost & Executive Vice President, Helene Fuld College of Nursing

2021-2022 Award Winner

- Dr. Ethan Bergman – Professor, Chair Department of Health Sciences, CWU – retired

Student Engagement & Awards – Seeking Nominations for AY22-23

Awarded to students who have demonstrated enthusiasm and commitment to advancing IPE through campus leadership, YVIPEC engagement, or community service. Candidates must be in good academic standing in a health professions program from a YVIPEC member institution and must be making progress towards completion the core IPE curriculum.

Collaborative Practice Community Champion – Seeking Nominations for AY22-23

Awarded to community member who has sustained contributions and service to the YVIPEC such as: 1) demonstrated enthusiasm for and commitment to advancing IPE, 2) increasing access to clinical experience for interprofessional teams of learners, and 3) improving community health and access through collaborative practice.

Development of Clinical and Service-Learning Partners

Triumph Treatment Services

Triumph is a multifaceted community service provider offering a continuum of care for substance use and mental health disorder treatment. They serve individuals and families from across the state of Washington through intensive inpatient and long-term residential programs, intensive outpatient, outpatient, family support groups, assessment and referral, case management and housing interventions.

ESD 105 Student Health Center

Educational Service District 105 is opening a new Health & Wellness Education Center on North First Street in Yakima this spring. The clinic will provide primary care, wellness services, mental health evaluation, and connection to community resources for students and families from Yakima schools. Amy Norton, Director of Health Services, and Jackie Follansbee, YSD nurse and special assignments are leading the project.

UGM Medical Clinic

YUGM Medical Care Center is one of only a few clinics in the Yakima Valley devoted to caring for the primary medical needs of people experiencing financial restraints and homelessness. Most of patients have no health insurance or the ability to pay for health care services. The YUGM Medical Care Center services are provided completely free of charge. The clinic averages more than 9,000 patient visits each year made possible by over 200 volunteer medical professionals.

Identify External Funding Sources

We have secured partnerships with the PNWU Office of Scholarly Activity and Development to support the YVIPEC in its endeavors to secure outside funding and growth of community partnerships. We are actively exploring funding through the following grants.

Macy Foundation

A national foundation that invests in programs improving the education of health professionals. Specifically, the foundation invests in programs fostering innovation in three key areas; 1) promoting diversity, equity, and belonging, 2) increasing collaboration among future health professionals, and 3) preparing future health professionals to navigate ethical dilemmas.

- Faculty Scholars
 - Macy Scholars receive salary support up to \$100,000 per year over two years to execute a scholarly project within their institution while participating in a program of career

development activities.

- President's Grant
 - Awarded one year or less in duration and awarded amounts are no more than \$25,000, *which includes* indirect costs of not more than 10%
- Board Grants
 - Awarded one to three years in duration with a budget target of no more than \$100K annually, *which includes* indirect costs at no more than 10%.

Legislative Asks (WA State Legislature ARPA Funds) – Available Fall of 2022

Requesting \$150,000 to expand the reach of the YVIPEC, providing offsets for faculty salaries to support expansion opportunities for student engagement in IP service learning in the community with emphasis on mental health collaboration and education.

Rosauers Supermarket Donation

Rosauers Supermarket believes in taking an active role in their communities by being involved with and supporting numerous activities, events, clubs, civic organizations, and licensed non-profit groups that help to improve the quality of life in the cities and towns where Rosauer's does business. The YVIPEC has requested a food donation to cover food expenses for the AY22-23 Culinary Medicine program.

GCACH Sponsorship Program

Greater Columbia Accountable Community of Health (GCACH) seeks to provide financial assistance to organizations hosting events or leading community-based projects that align with GCACH's project areas and mission to advance the health of the population by decreasing health disparities, improving efficiency of health care delivery, and empowering individuals and communities through collaboration, innovation, and engagement.